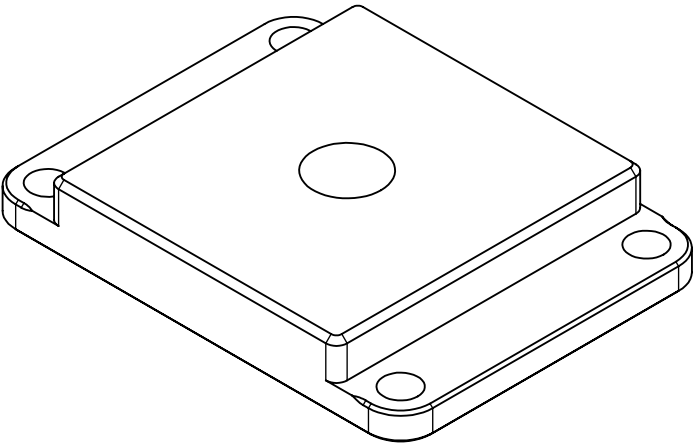

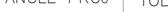


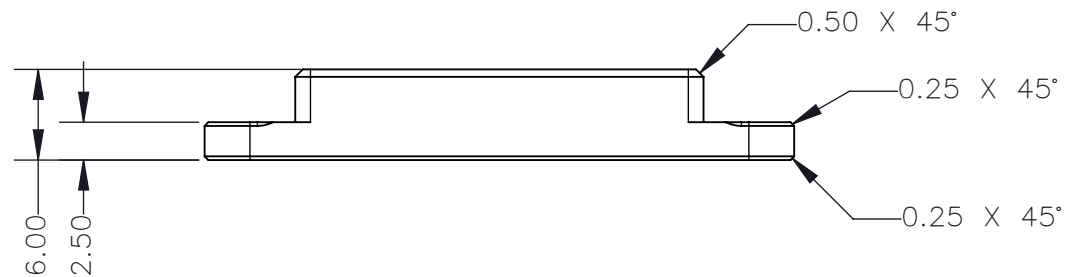
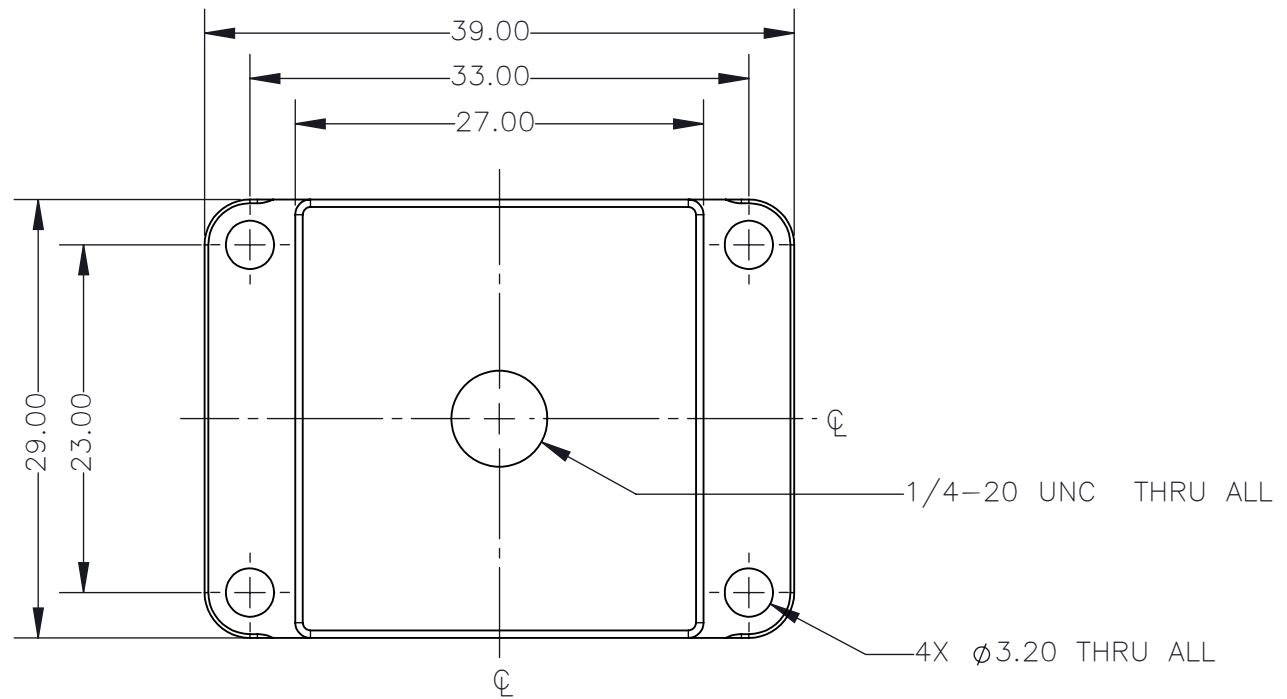
REVISIONS				
REV.	DESCRIPTION	DATE DONE	DONE BY	CHECKED BY
0	FILENAME WAS 55683-05-R0	13.SEP.18	GUS	CHRIS



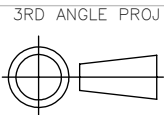
NOTES:

1. MATERIAL IS 6061-T6 ALUMINUM
2. LIGHT BEAD BLAST, THEN ANODIZE MIL-A-8625F, TYPE 2, CLASS 2, BLACK, 0.7-1.0 MILS
3. MUST BE COMPLIANT WITH THE CURRENT ROHS DIRECTIVE 2002/95/EC (INCLUDING DECA-BDE)

	PROPRIETARY AND CONFIDENTIAL THE INFORMATION CONTAINED IN THIS DRAWING IS THE SOLE PROPERTY OF FLIR INTEGRATED IMAGING SOLUTIONS. ANY REPRODUCTION IN PART OR WHOLE WITHOUT THE WRITTEN PERMISSION OF FLIR INTEGRATED IMAGING SOLUTIONS IS PROHIBITED.	3RD ANGLE PROJ 	TOLERANCES X.X ±0.3 X.XX ±0.10 X.XXX ±0.020 ANGLES ±0.5°	UNLESS OTHERWISE STATED: ALL DIMENSIONS IN MM MACHINE FINISH 1.6µM	SCALE 2:1	DWG NO 12-02709-00000	SHEET 1 OF 2	REV 0
					SIZE A	TITLE BFS-XL TRIPOD ADAPTER		



PROPRIETARY AND CONFIDENTIAL
THE INFORMATION CONTAINED IN THIS DRAWING IS
THE SOLE PROPERTY OF FLIR INTEGRATED IMAGING
SOLUTIONS. ANY REPRODUCTION IN PART OR
WHOLE WITHOUT THE WRITTEN PERMISSION OF FLIR
INTEGRATED IMAGING SOLUTIONS IS PROHIBITED.



TOLERANCES
X.X ± 0.3
X.XX ± 0.10
X.XXX ± 0.020
ANGLES $\pm 0.5^\circ$

UNLESS OTHERWISE
STATED:
ALL DIMENSIONS IN MM
MACHINE FINISH 1.6 μ M

SCALE DWG NO
2:1 12-02709-00000
SIZE TITLE
A BFS-XL TRIPOD ADAPTER

SHEET REV
2 OF 2 0